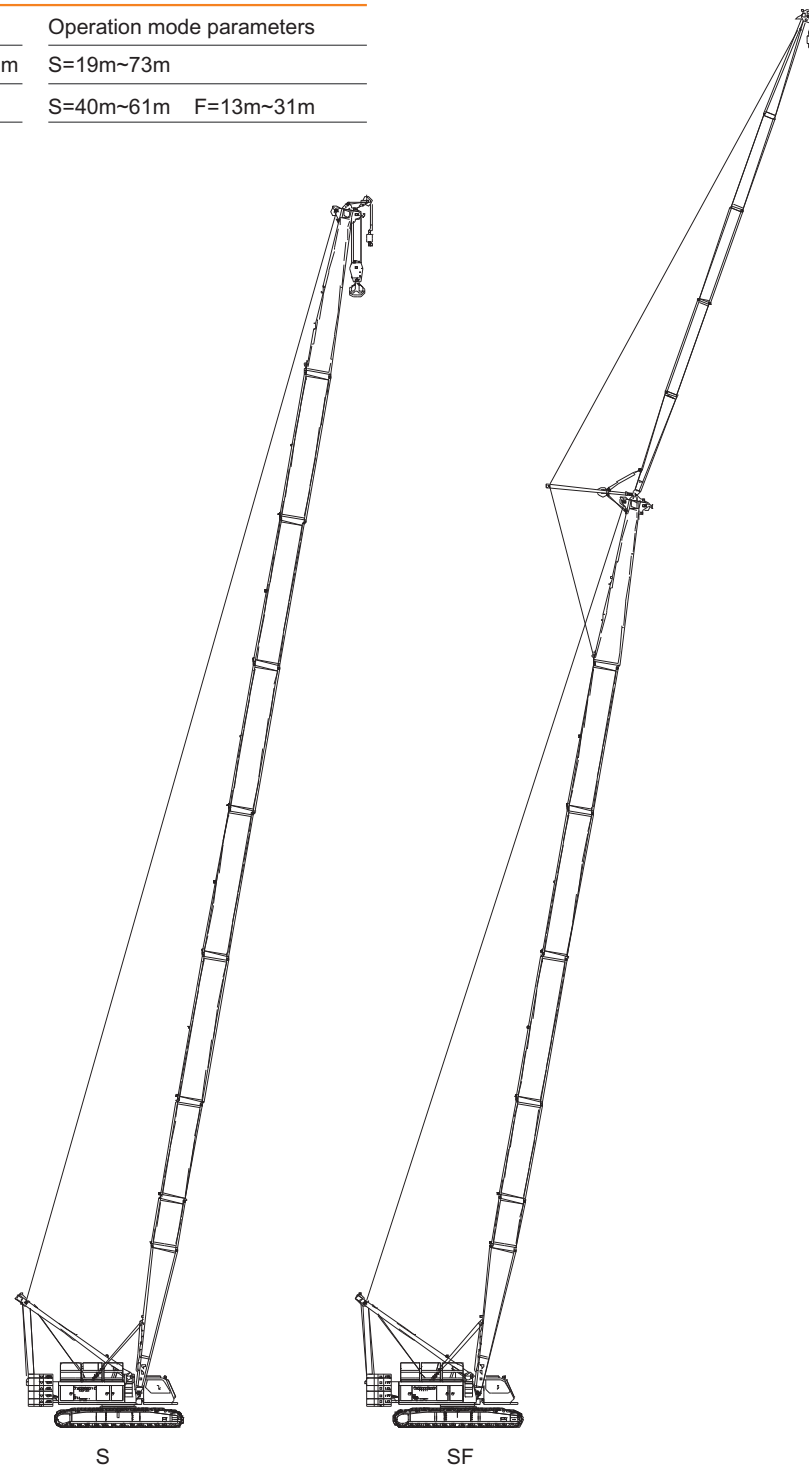


III. Description of Boom Assembly

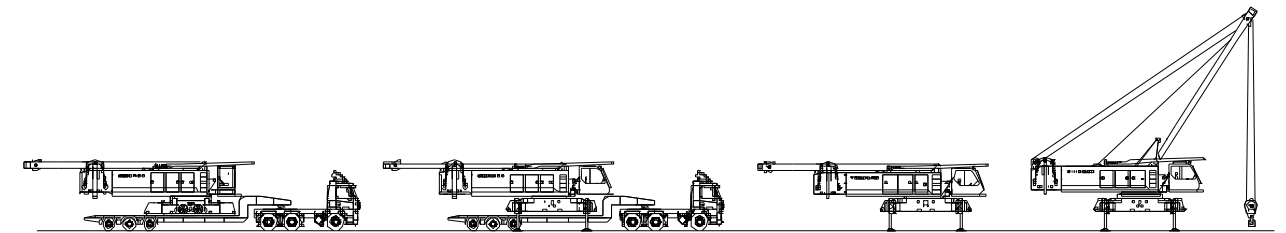
Descriptions of Boom Assembly Codes

Code	Type	Operation mode parameters
S	Main boom	S=19m~73m
SF	Fixed jib	S=40m~61m F=13m~31m

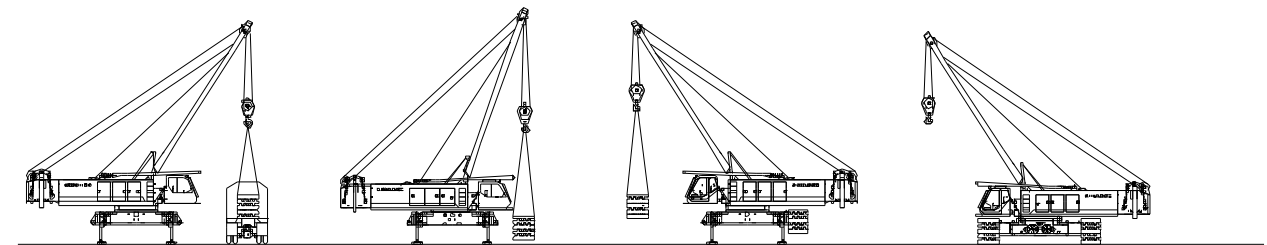


IV. Self-Mounting and Dismounting Functions

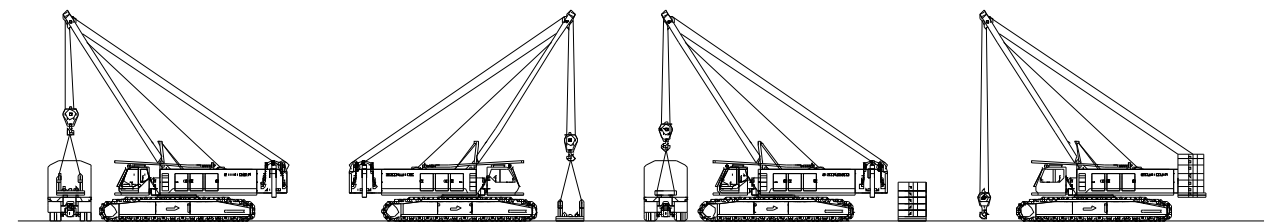
(Taking the self-mounting process following unloading as an example)



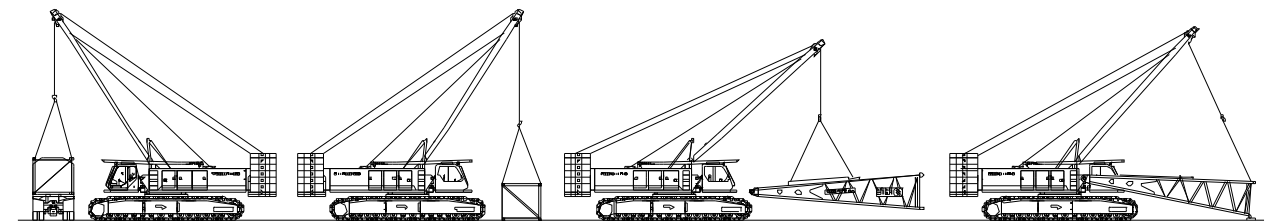
Unloading of main machine



Unloading and assembling of crawler carrier



Unloading and assembling of counterweight base plate and counterweight

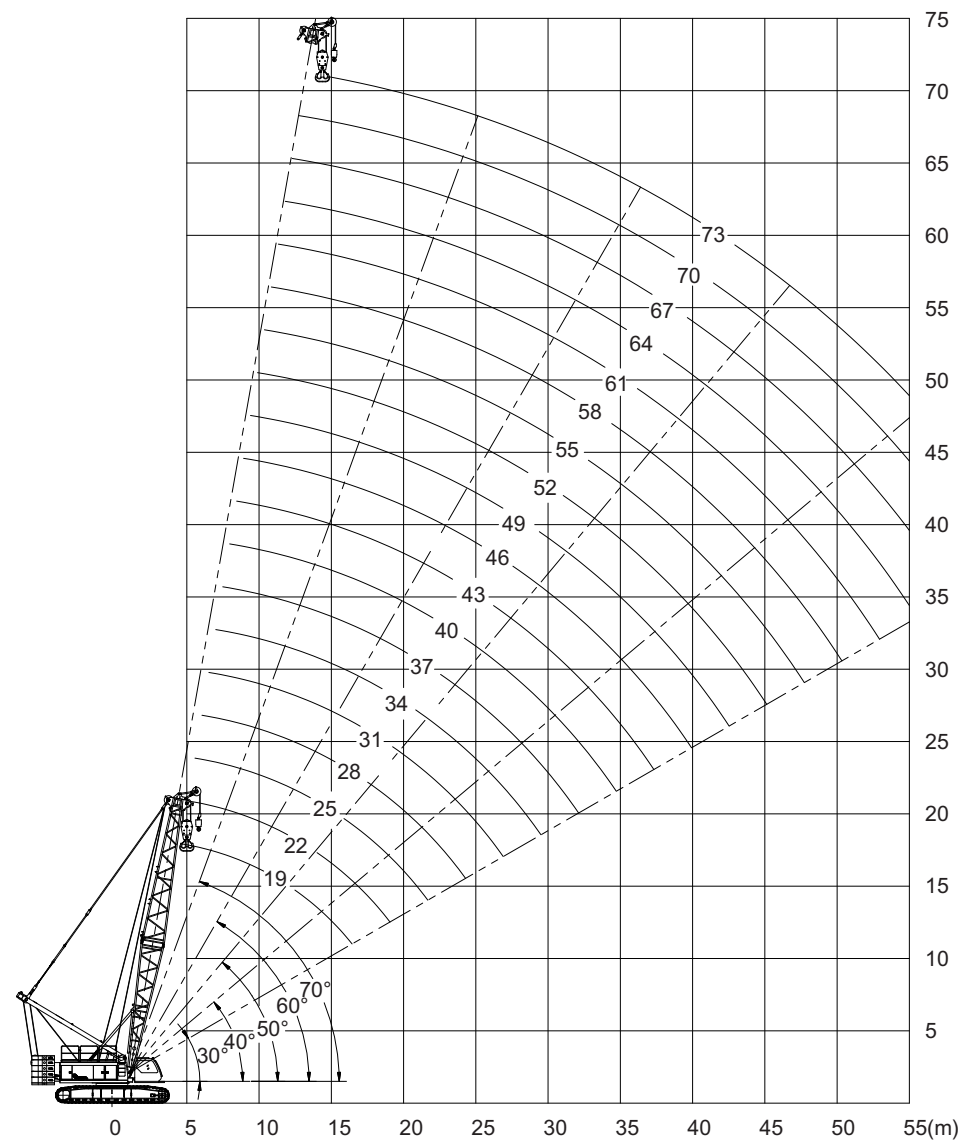


Unloading and assembling of boom

V. Lifting Performance

10. Lifting Characteristics of Main Boom

Main Boom Lifting Height Characteristics Curve



Notes:

1. The working radius is shown along the horizontal axis, the lifting height is shown along the vertical axis, and the unit of measurement is meter (unit: m).
2. The working length of the main boom during crane operations with the main boom is 19~73m.
3. The main boom height curves diagram does not include the influence of boom deflection.

Table of Main Boom Lifting Performance (I)

Unit of measurement: t

Length of main boom (m)	19	22	25	28	31	34	37	40	43
Radius (m)									
4.5	130								
5	110								
6	100	100	97.5						
7	94.5	93	91	89					
8	79.3	78.5	78.4	78	78	70			
9	66.4	66.4	66.4	66.4	66.4	66.3	66.3	58	
10	56.9	56.9	56.9	56.9	56.8	56.8	56.7	56.7	53
12	44.1	44.1	44.1	44	44	43.9	43.8	43.8	43.7
14	35.8	35.8	35.8	35.8	35.7	35.6	35.6	35.4	35.3
16	30.1	30.1	30.1	30.1	29.9	29.8	29.7	29.6	29.6
18	27.6/17m	25.8	25.8	25.7	25.6	25.6	25.5	25.4	25.3
20		22.6	22.6	22.4	22.4	22.3	22.2	22.1	22
22			19.9	19.9	19.7	19.7	19.6	19.5	19.4
24				17.8	17.6	17.6	17.5	17.4	17.3
26				16.8/25m	15.9	15.9	15.8	15.6	15.5
28					14.5	14.4	14.2	14.1	14.1
30						13.1	13.1	12.9	12.8
32							11.6	11.5	11.5
34							11.4/33m	10.5	10.5
36								10.1/35m	9.5
38									8.9

Table of Main Boom Lifting Performance (II)

Unit of measurement: t

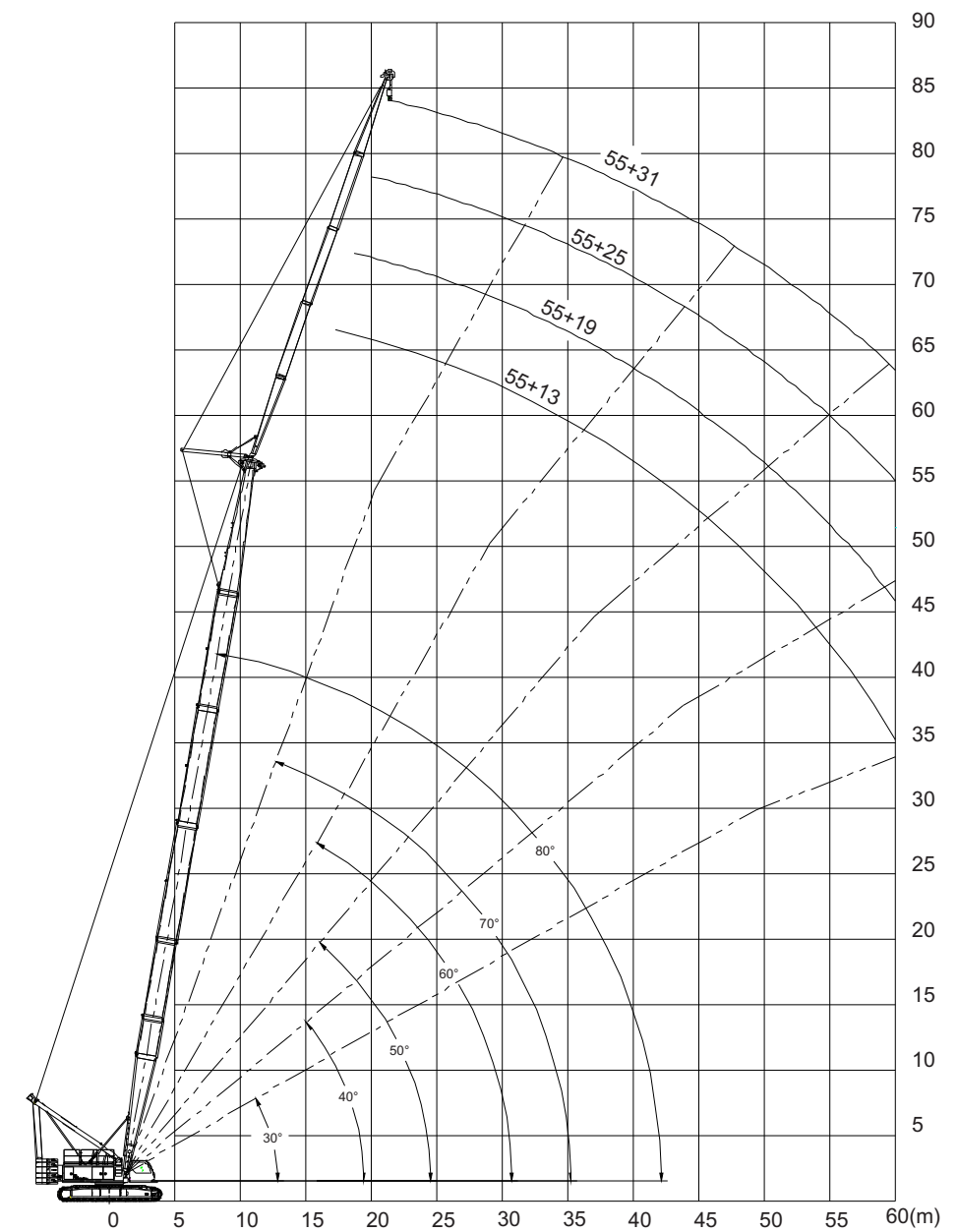
Length of main boom (m)	46	49	52	55	58	61	64	67	70	73
Radius (m)										
10	48	46.4								
12	43.5	43.5	43.4	41.7	37					
14	35.3	35.2	35.1	35	34.7	32.2				
16	29.5	29.4	29.2	29.2	29.1	29	26.8	28.3	23.8	19
18	25.3	25.1	25	24.9	24.8	24.7	24.6	26	21.2	18.1
20	22	21.9	21.7	21.6	21.5	21.4	21.3	22.6	19.2	17.2
22	19.3	19.2	19	19	18.9	18.8	18.7	19.4	17.3	15.6
24	17.2	17.1	16.9	16.9	16.8	16.3	16.1	16.9	15.8	14.4
26	15.5	15.3	15.2	14.9	14.7	14.5	14.3	14.8	13.9	13.8
28	14	13.5	13.4	13.4	13.1	13	12.7	13.1	12.3	12.1
30	12.5	12.3	12.1	2	11.7	11.6	11.3	11.6	11	10.8
32	11.3	11.2	10.9	10.8	10.6	10.4	10.3	10.4	9.8	9.6
34	10.3	10.2	9.9	9.8	9.6	9.4	9.2	9.3	8.7	8.6
36	9.4	9.2	9	9	8.6	8.5	8.3	8.4	7.9	7.7
38	8.7	8.4	8.2	8.1	7.9	7.7	7.6	7.6	7.1	6.9
40	7.9	7.7	7.6	7.5	7.1	7	6.8	6.8	6.4	6.2
42	7.7/41m	7	6.9	6.8	6.6	6.4	6.2	6.2	5.7	5.5
44		6.8/43m	6.4	6.3	5.9	5.8	5.6	5.6	5.2	5
46			5.8	5.7	5.4	5.3	5.1	5	4.6	4.4
48				5.2	5	4.8	4.6	4.6	4.2	4
50					4.5	4.3	4.2	4.2	3.8	3.6
52					4.4/51m	4	3.8	3.8	3.3	
54						3.7	3.5	3.5	3	
56							3.1	3.1	2.6	
58								2.9	2.4	
60								2.6/59m	2.1	
62									1.8/61m	

Notes:

1. During crane operation with gooseneck boom: the lifting capacity is equal to the lifting capacity of the main boom at the same radius, but must not exceed the maximum of 13 tons;
2. While crane with the gooseneck boom is used, the main boom and gooseneck boom may not operate at the same time;
3. The load on the main boom with a gooseneck boom is consistent with the load on the main boom without a gooseneck boom.

11. Lifting Performance of Main Boom + Fixed Jib

Main Boom + Fixed Jib Lifting Height Characteristics Curve (I)

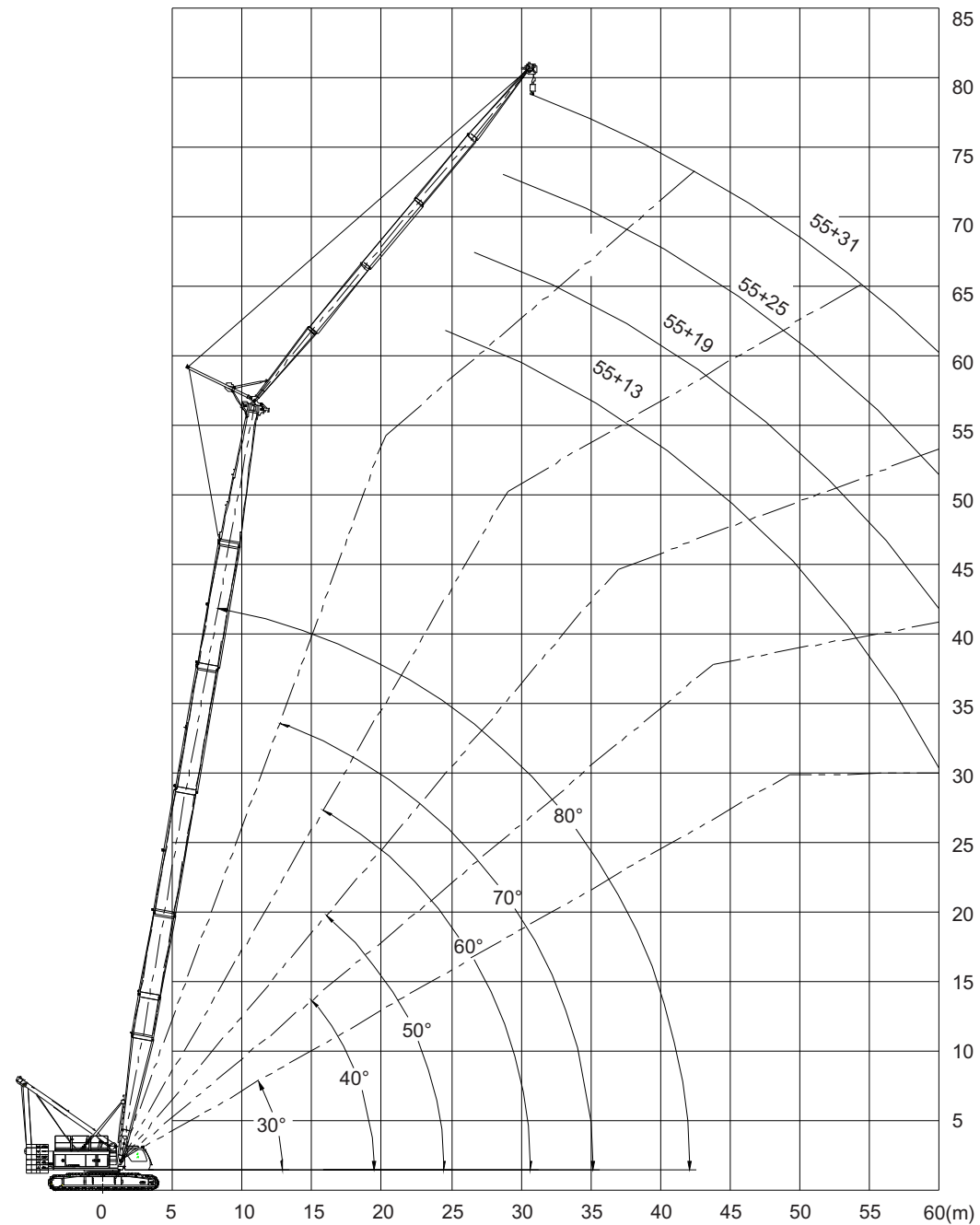


When the angle between the fly jib and main boom is 10°

Notes:

1. The working radius is shown along the horizontal axis, the lifting height is shown along the vertical axis, and unit of measurement is meter (unit: m).
2. The working length of the main boom during crane operations with fixed jib is 40~61m, and the working length of the fixed jib is 13~31m.

Main Boom + Fixed Jib Lifting Height Characteristics Curve (II)



When the angle between the fly jib and main boom is 30°

Notes:

1. The working radius is shown along the horizontal axis, the lifting height is shown along the vertical axis, and unit of measurement is meter (unit: m).
2. The working length of the main boom during crane operations with fixed jib is 40~61m, and the working length of the fixed jib is 13~31m.

Table of Fixed Jib Lifting Performance (I)

Unit of measurement: t

Length of main boom (m)	40							
	13		19		25		31	
Length of fly jib (m)	Jib set angle (°)							
	10°	30°	10°	30°	10°	30°	10°	30°
14	13.0							
16	13.0	13.0						
18	13.0	12.6	12.6					
20	13.0	12.0	12.5	11.6	9.9		6.6	6.6
22	13.0	12.0	12.5	11.4	9.6		6.4	6.4
24	13.0	12.0	12.5	11.3	9.4	8.1	6.2	6.2
26	13.0	12.0	11.7	11.2	9.2	7.9	6.0	6.0
28	13.0	11.7	11.3	11.0	9.0	7.7	5.8	5.8
30	12.0	10.9	10.6	10.6	8.8	7.6	5.6	5.6
32	11.7	10.0	9.5	9.5	7.9	7.4	5.3	5.3
34	10.6	9.2	8.8	8.8	7.8	7.2	5.2	5.2
36	9.6	9.2	8.2	8.2	7.4	7.1	5.0	5.0
38		9.2		8.0		7.0	4.8	4.8
40		9.1		7.4		6.8		4.7
42		8.4		6.8		6.5		4.5
44		7.8		6.3		6.3		4.4
46				5.7		6.2		4.3
48				5.3		5.5		4.1
50				4.9		5.2		4.0
52						4.7		
54						4.5		
56						4.1		

Notes: The data in the table below is for the main boom without the main hook

Table of Fixed Jib Lifting Performance (II)

Unit of measurement: t

Length of main boom (m)	43							
	13		19		25		31	
Length of fly jib (m)	Jib set angle (°)							
Radius	10°	30°	10°	30°	10°	30°	10°	30°
16	13.0	12.8						
18	13.0	12.6	12.6					
20	13.0	12.0	12.5	11.6			6.6	6.6
22	13.0	12.0	12.5	11.5	9.7	8.4	6.4	6.4
24	13.0	12.0	12.5	11.3	9.5	8.2	6.3	6.3
26	13.0	11.7	11.7	11.2	9.3	8.0	6.1	6.1
28	13.0	11.5	11.3	11.0	9.1	7.8	5.9	5.9
30	12.0	10.6	10.6	10.6	9	7.6	5.7	5.7
32	11.1	9.9	9.5	9.5	8.1	7.5	5.5	5.5
34	10.1	9.2	8.8	8.8	7.8	7.3	5.3	5.3
36	9.2	9.2	8.2	8.2	7.6	7.2	5.1	5.1
38	8.8	9.2		7.9	7.3	7.0	4.9	4.9
40		7.5		7.3		6.6		4.8
42		7.4		6.7		6.4		4.6
44		6.5		6.2		6.2		4.5
46		5.9		5.6		5.9		4.4
48				5.2		5.4		4.2
50				4.8		5.1		4.1
52				4.5		4.6		3.9
54						4.4		
56						4.0		
58						3.7		

Table of Fixed Jib Lifting Performance (III)

Unit of measurement: t

Length of main boom (m)	46							
	13		19		25		31	
Length of fly jib (m)	Jib set angle (°)							
Radius	10°	30°	10°	30°	10°	30°	10°	30°
16	12.5							
18	12.5	12.5	12.5					
20	12.5	12.0	12.5					
22	12.5	12.0	12.5	11.5	9.8		6.4	6.4
24	12.2	12.0	12.0	11.3	9.6	8.2	6.3	6.3
26	12.2	11.7	11.7	11.2	9.4	8.0	6.2	6.2
28	12.2	11.3	11.4	11.0	9.2	7.9	6.0	6.0
30	12.0	10.6	10.4	10.4	9.0	7.7	5.8	5.8
32	10.9	9.5	9.5	9.5	8.8	7.5	5.6	5.6
34	9.9	8.8	8.8	8.8	8.0	7.4	5.4	5.4
36	9.1	8.7	8.1	8.1	7.7	7.2	5.2	5.2
38	8.3	8.3	7.7	7.8	7.4	7.1	5.0	5.0
40	7.5	7.5	7.7	7.2	6.9	7.0	4.9	4.9
42	7.4	7.4	7.7	6.6	6.4	6.4	4.7	4.7
44		6.5		6.1		6.1	4.6	4.6
46		5.9		5.5		5.9		4.4
48		4.8		5.1		5.4		4.2
50				4.7		4.9		3.9
52				4.4		4.5		3.7
54				4.0		4.3		3.6
56						3.9		
58						3.6		
60						3.3		

Table of Fixed Jib Lifting Performance (IV)

Unit of measurement: t

Length of main boom (m)	49							
	13		19		25		31	
Length of fly jib (m)	Jib set angle (°)							
Radius	10°	30°	10°	30°	10°	30°	10°	30°
16	12.5							
18	12.5	12.5						
20	12.5	12.0	12.5					
22	12.5	12.0	12.5	11.5	9.9		6.6	6.6
24	12.2	12.0	12.0	11.3	9.7		6.4	6.4
26	12.2	11.7	11.9	11.2	9.5	8.1	6.2	6.2
28	12.2	11.3	11.0	11.0	9.3	7.9	6.1	6.1
30	11.9	10.2	9.9	9.9	9.1	7.7	5.9	5.9
32	11.7	9.5	9.1	9.1	9	7.6	5.6	5.6
34	10.6	8.8	8.5	8.5	8.1	7.4	5.5	5.5
36	9.6	8.7	7.9	7.9	7.9	7.3	5.3	5.3
38	8.7	8.1	7.7	7.6	7.2	7.2	5.1	5.1
40	8.0	7.4	7.7	7.1	6.7	6.7	5.0	5.0
42	7.2	6.7	7.1	6.5	6.3	6.3	4.8	4.8
44	6.6	6.5	6.8	6.0		6.2	4.6	4.6
46		5.9		5.4		5.7		4.4
48		4.7		5.0		5.3		4.0
50		4.4		4.6		4.8		3.8
52		4.0		4.3		4.5		3.7
54				3.9		4.1		3.6
56				3.6		3.8		3.5
58				3.3		3.5		
60						3.2		

Table of Fixed Jib Lifting Performance (V)

Unit of measurement: t

Length of main boom (m)	52							
	13		19		25		31	
Length of fly jib (m)	Jib set angle (°)							
Radius	10°	30°	10°	30°	10°	30°	10°	30°
18	12.5	12.5						
20	12.5	12.0	12.5					
22	12.5	12.0	12.5	11.5	9.9		6.6	6.6
24	12.0	12.0	11.7	11.3	9.7		6.4	6.4
26	11.7	11.7	11.5	11.2	9.5	8.1	6.3	6.3
28	11.7	10.9	10.6	10.6	9.4	8.0	6.1	6.1
30	11.7	9.9	9.9	9.9	9.2	7.8	5.9	5.9
32	11.7	9.1	8.8	8.8	8.8	7.6	5.7	5.7
34	10.6	8.6	8.3	8.3	8.3	7.5	5.5	5.5
36	9.6	8.5	7.6	7.6	7.6	7.4	5.4	5.4
38	8.7	8.0	7.5	7.5	7.2	7.2	5.2	5.2
40	8.0	7.2	7.4	6.9	6.5	6.5	5.0	5.0
42	7.2	6.6	6.8	6.4	6.2	6.2	4.9	4.9
44	6.6	6.0	6.2	6.1	5.6	5.6	4.7	4.7
46	6.0	5.9	6.1	5.4	5.2	5.2	4.3	4.3
48	5.7	4.9		4.9		5.1	4.0	4.0
50		4.9		4.5		4.7	3.7	3.7
52		3.9		4.1		4.4		3.4
54		3.6		3.8		4.0		3.0
56				3.5		3.7		2.8
58				3.2		3.4		2.5

Table of Fixed Jib Lifting Performance (VI)

Unit of measurement: t

Length of main boom (m)	55							
	13		19		25		31	
Length of fly jib (m)	Jib set angle (°)							
Radius	10°	30°	10°	30°	10°	30°	10°	30°
18	12.5	12.5						
20	12.5	12.0	12.5					
22	12.5	12.0	12.3	11.5			6.7	6.7
24	12.0	12.0	11.7	11.3	9.8		6.6	6.6
26	11.7	11.7	11.3	11.2	9.6	8.2	6.4	6.4
28	11.7	10.6	10.3	10.3	9.4	8	6.3	6.3
30	11.6	9.9	9.9	9.9	9.3	7.8	6.2	6.2
32	10.5	8.8	8.8	8.8	8.8	7.7	6.0	6.0
34	9.5	8.6	8.1	8.1	8.1	7.6	5.8	5.8
36	8.7	8.6	7.6	7.6	7.6	7.4	5.6	5.6
38	7.9	7.9	7.6	7.2	6.9	6.9	5.5	5.5
40	7.1	7.1	7.4	6.7	6.5	6.5	5.3	5.3
42	6.5	6.5	6.8	6.2	5.8	5.8	5.1	5.1
44	6.0	5.9	6.3	6.1	5.4	5.4	4.9	4.9
46	5.4	5.4	5.8	5.4	5.0	5.0	4.4	4.4
48	5.0	4.9	5.3	4.9	4.9	4.9	4.1	4.1
50	4.9	4.9	5.2	4.5		4.6	3.9	3.9
52		4.2		4.0		4.3		3.5
54		3.4		3.6		3.9		3.3
56		3.1		3.4		3.6		
58				3.1		3.3		

Table of Fixed Jib Lifting Performance (VII)

Unit of measurement: t

Length of main boom (m)	58					
	13		19		25	
Length of fly jib (m)	Jib set angle (°)					
Radius	10°	30°	10°	30°	10°	30°
18	12.5					
20	12.5	12.0	12.5			
22	12.5	12.0	12.3			
24	12.0	12.0	11.7	11.3	9.6	
26	11.7	11.7	10.9	10.9	9.5	
28	11.7	10.6	10.2	10.2	9.3	8.0
30	11.4	9.5	9.1	9.1	9.1	7.9
32	10.3	8.8	8.5	8.5	8.5	7.7
34	9.4	8.6	8.0	8.0	8.0	7.6
36	8.5	8.5	7.7	7.6	7.2	7.2
38	7.7	7.7	7.7	7.1	6.7	6.7
40	6.9	6.9	7.3	6.5	6.2	6.2
42	6.3	6.3	6.7	6.1	5.8	5.8
44	5.8	5.8	6.1	6.1	5.3	5.3
46	5.2	5.2	5.6	5.6	4.9	4.9
48	4.8	4.7	5.1	5.1	4.9	4.9
50	4.3	4.3	4.6	4.6	4.9	4.5
52	4.2	4.2	4.5	4.0	4.9	4.2
54		3.3		3.6		3.8
56		3.0		3.3		3.5
58		2.7		2.9		3.2

Table of Fixed Jib Lifting Performance (VIII)

Unit of measurement: t

Length of main boom (m)	61			
	13	13	19	19
Length of fly jib (m)	Jib set angle (°)			
	10°	30°	10°	30°
18	12.0			
20	12.0	12.0		
22	12.0	12.0	12.0	
24	12.0	12.0	11.7	11.1
26	11.7	11.7	10.9	10.9
28	11.7	10.6	9.9	9.9
30	11.2	9.5	8.8	8.8
32	10.1	8.8	8.3	8.3
34	9.2	8.6	7.6	7.6
36	8.3	8.3	7.6	7.6
38	7.4	7.4	7.6	7.1
40	6.8	6.7	7.1	6.5
42	6.1	6.2	6.5	6.3
44	5.5	5.6	5.9	5.8
46	5.0	5.2	5.4	5.4
48	4.5	4.7	4.9	5
50	4.1	4.3	4.4	4.5
52	3.7	3.9	4.0	4.2
54	3.5	3.3	3.8	3.8
56		3.0		3.5
58		2.7		3.1
60		2.6		2.8
62				2.6